

REFUELER AND HYDRANT INJECTOR

MODEL 800

In keeping with the Hammonds family of positive displacement fluid motors is the Model 800. This unit is simply a larger version of our very popular series 600. Operating in flow conditions up to 700 GPM, the 800 offers precision injection of additives meeting the requirements of delivery terminals, high volume delivery vehicles and waste water treatment plants. With the available horsepower delivered by this unit, a variable speed gearbox may be added to drive balanced diaphragm pumps capable of reaching injection point line pressures of up to 1000 psi.

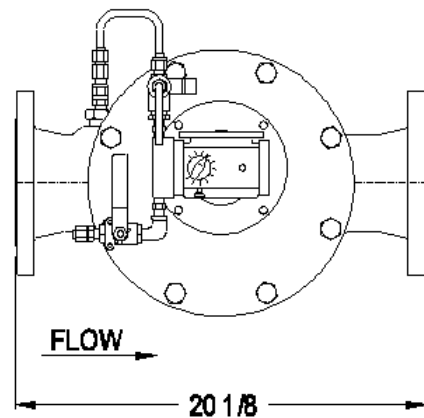
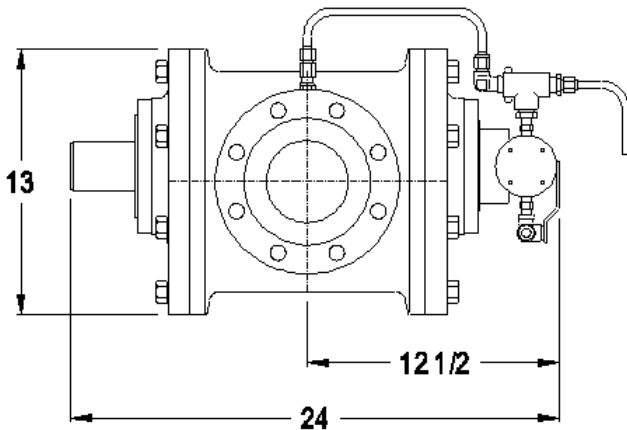


SPECIFICATIONS:

- Flooded suction required
- Number of additives: 1 Standard, Up to 4 Optional
- 4" 150# RF ANSI flanges standard (other connections available, consult factory for details)
- Injection ratios: 0-4000 PPM depending upon application
- 75-700 GPM continuous operation
- 50-750 GPM intermittent operation
- Product temperature range:- -40- +250 F
- Maximum product line pressure: 150 PSI
- Product viscosities: To 10,000 SSU
- Fuels, oils, additives, and liquid gases
- Duty cycle: Intermittent
- Upgrade to Hammonds "Smart" System

MATERIALS OF CONSTRUCTION:

- Hard anodized aluminum or carbon steel
- Metering pump: All wetted parts 300 series stainless steel
- Elastomers: Aflas, Viton & Teflon
- Mechanical Seal: Carbon on ceramic



The Model 800 is a completely self-contained unit that offers totally unassisted injection. Product meters and pulsars are not required allowing a simple and economical installation that provides the customer with guaranteed precision blending of their additive time after time.



www.hammondscos.com

Hammonds Technical Services
15760 West Hardy Road
Suite 400
Houston TX 77060
Phone-(800) 582-4224- Fax (281) 847-1857



MODEL 800 FLUID POWERED MOTOR

MODEL 800-1S Injector

Standard Equipment:

- ◆ 4" Hammonds Positive displacement drive
- ◆ Hard anodized cast aluminum housing
- ◆ 4" 150# R.F. ANSI flanges
- ◆ Hammonds 1S injection pump delivering ratios to 400 PPM
- ◆ All stainless steel wetted parts
- ◆ Adjustable "while running" calibration abilities
- ◆ Non-blocking vent/inject diversion valve
- ◆ Teflon elastomers on injection pump
- ◆ Stainless steel check valves
- ◆ Built-in injection point with check valve up stream of turbine
- ◆ Graduated calibration bottle
- ◆ White acrylic enamel paint

Optional Equipment:

- ◆ 3" Victaulic clamps (pair)
- ◆ 3" x 2" Victaulic reducer clamps (pair)
- ◆ 3" NTT aluminum truck flanges (pair)
- ◆ Desiccant dryer replacement
- ◆ Standard sight flow assembly
- ◆ 5 gallon siphon tube assembly
- ◆ 55 gallon siphon tube assembly
- ◆ 5-SF sight flow indicator for 5 gallon pail
- ◆ 55-SF sight flow indicator for 55 gallon drum
- ◆ Single or dual remote panel assembly: includes the following:
 - Mounting bracket with multi-port selector valve
 - Standard sight flow indicator
 - 5 gallon siphon tube assembly
 - 60 feet 3/8" Synflex tubing
- ◆ Suction calibration gauge:
 - SCG112 (1"x 12")
 - SCG206 (2"x 6")
 - SCG212 (2" x 12")
 - SCG314 (3"x 14")
 - SCG1212 (12"x12")
- ◆ Weather enclosure for entire system
- ◆ Security covers for calibration dials



MODEL 800 INJECTOR PUMP OPTIONS

Performance Statement: PPM ratings are based on 100% volumetric efficiency and maximum stroke settings of each fluid end and size. Hammonds recommends for continuous duty applications, **no more than 50%** of these maximums be utilized. For intermittent duty, **no more than 80%** of these maximums be utilized.

Total Operation in 24 hours: 0-7 Hours/Intermittent 8+ Hours/Continuous

Single Additive

<u>Injection Ratio</u>	<u>Pump Model</u>
To 100 PPM	1P7
To 450 PPM	1S
To 625 PPM	1M
To 1250 PPM	1L
To 800 PPM	2S
To 1300 PPM	2M
To 2500 PPM	2L
To 4000 PPM	4L

Dual Additives

First additive to 450 PPM. Second additive as follows

<u>Injection Ratio</u>	<u>Pump Model</u>
To 100 PPM	1S-1P7
To 450 PPM	1S-1S
To 625 PPM	1S-1M
To 1250 PPM	1S-1L
To 1300 PPM	1S-2M
To 2500 PPM	1S-2L

First additive to 625 PPM. Second additive as follows

<u>Injection Ratio</u>	<u>Pump Model</u>
To 100 PPM	1M-1P7
To 450 PPM	1M-1S
To 625 PPM	1M-1M
To 1250 PPM	1M-1L
To 1300 PPM	1M-2M
To 2500 PPM	1M-2L

First additive to 1250 PPM. Second additive as follows

<u>Injection Ratio</u>	<u>Pump Model</u>
To 100 PPM	1L-1P7
To 450 PPM	1L-1S
To 625 PPM	1L-1M
To 1250 PPM	1L-1L
To 1300 PPM	1L-2M